



247 Gertrude Street FITZROY VIC

Favourably positioned, at the Paris End of one of Melbourne's most tightly held retail strips, Fitzroy's Iconic Gertrude Street.

- Double Storey Shop & 3 Bedroom Dwelling
- 6 Principle Rooms
- Flexible Commercial 1 Zoning caters to a multitude of uses (STCA)
- Comfortable order, with scope to value add
- Premiere location famous for its culinary delights, art galleries and on trend retail
- Vacant Possession

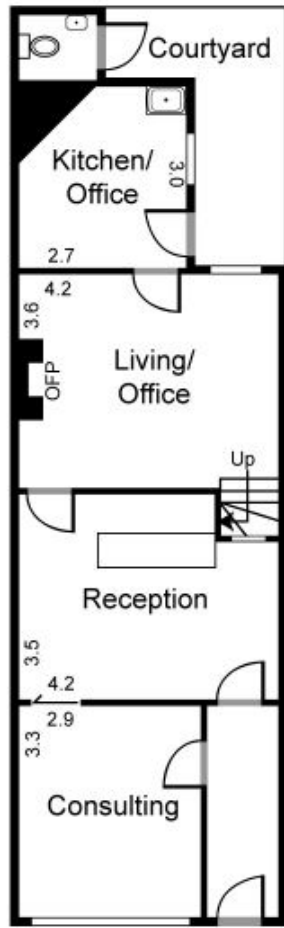
Current Covid-19 Notice
<https://www.vic.gov.au/coronavirus-covid-19-restrictions-vic>

Type	: Retail
Price	: \$ 1,250,000
Building Size	: 100 sqm
Land Size	: 72 sqm
View	: https://www.petermarkovic.com.au/sale/vic/inner-city/fitzroy/commercial/retail/7508102



Paul Markovic
0411866464

[For full version visit the website](#)



Ground Floor



First Floor