



101/39 Coventry Street SOUTHBANK VIC

2 1 1

With a favourable North Facing aspect, this chic and stylish apartment located in the heart of Southbank precinct, has all the comforts required for a relaxed lifestyle, just kickback and enjoy.

Ideal for the owner occupier or perfect blue chip rental investment.

The prestigious Guilfoyle complex is well positioned close to Royal Botanic Gardens and popular St Kilda Road Boulevard.

This contemporary 2 bedroom apartment has plenty of natural light, open plan living/dining, a stylish kitchen with quality appliances, ample cupboard space and a private outdoor undercover private balcony/terrace with amazing views.

Both bedrooms are ensuited to a sparkling modern central

Type : Apartment

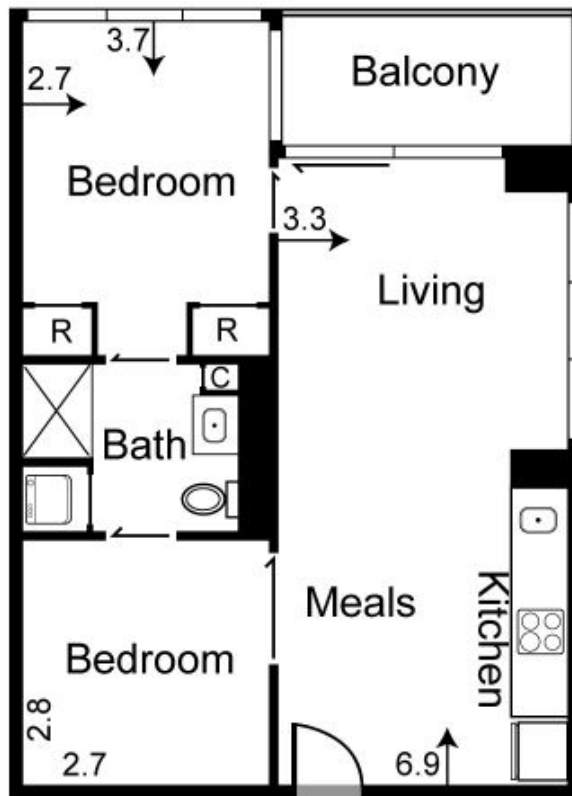
Price : \$ 470,000

View : <https://www.petermarkovic.com.au/sale/vic/inner-city/southbank/residential/apartment/7485245>



Paul Markovic
0411866464

[For full version visit the website](https://www.petermarkovic.com.au)



Storage
Cage

Secure
Car Space